

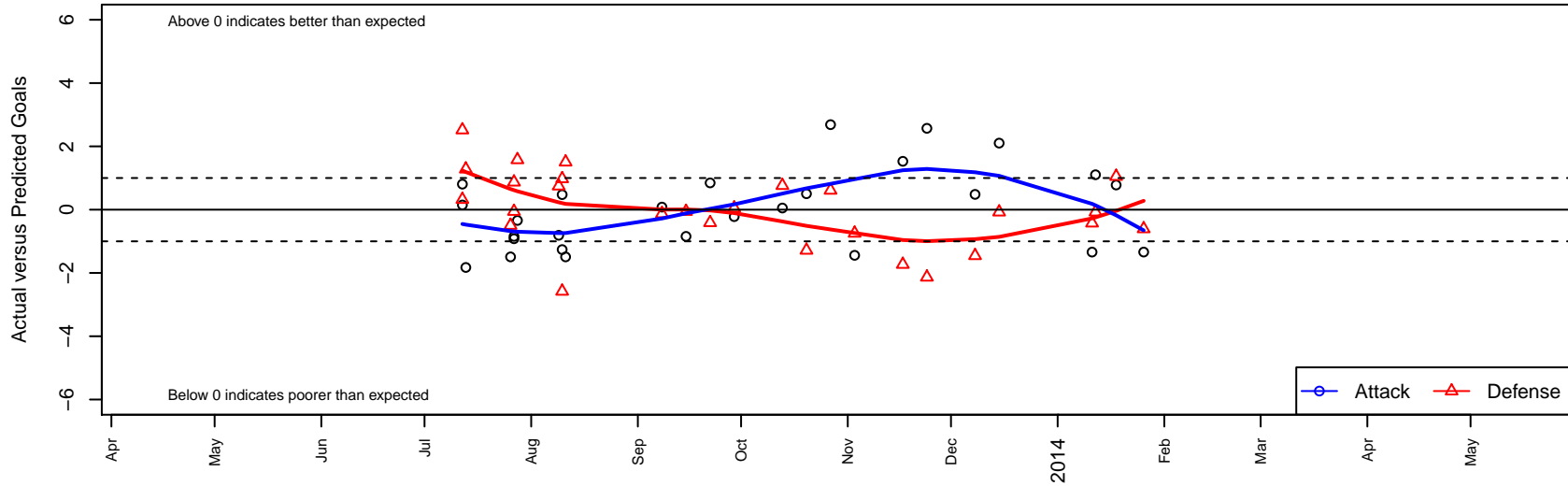
# Seattle United NE Blue B98

Seattle United Regional  
 Seattle, WA  
 B98 total strength=1178  
 attack=5.67 defense=2.42  
 fall league = NPSL B15D2  
 alt names used:  
 Seattle United NE Blue B98  
 Seattle United NE Blue  
 Seattle United NE B98 Blue  
 Seattle United B98 NE Blue  
 Seattle United NE Blue [B98]  
 2013 Seattle United NE B98 Blue

Venues played:  
 Seattle Cup BU15  
 Crossfire Select Cup BU15 Silver  
 Mt Hood Challenge BU15 Silver  
 NPSL B15D2  
 Founders Cup B98



**Seattle United NE Blue B98**  
 Dots are actual minus expected GF (blue circles) and GA (red triangles).  
 Blue line is smoothed change in attack strength. Red is smoothed change in defense strength.



	<b>date</b>	<b>home</b>		<b>away</b>		<b>venue</b>	<b>pred.home</b>	<b>pred.away</b>
21881	2014-01-26	TC United B98	4	Seattle United NE Blue B98	0	Founders Cup B98	3.39	1.34
21394	2014-01-18	Seattle United NE Blue B98	2	Mercer Island FC Whitecaps B98	2	Founders Cup B98	1.22	3.05
21225	2014-01-12	Seattle United NE Blue B98	4	Newport FC Raiders B98	1	Founders Cup B98	2.90	0.92
21167	2014-01-11	Washington Timbers Burgundy B98	3	Seattle United NE Blue B98	0	Founders Cup B98	2.58	1.34
20810	2013-12-15	Newport FC Raiders B98	1	Seattle United NE Blue B98	5	NPSL B15D2	0.92	2.90
20678	2013-12-08	Seattle United NE Blue B98	2	Lake Hills Flash B98	4	NPSL B15D2	1.52	2.55
19369	2013-11-24	Seattle United W Blue B98	4	Seattle United NE Blue B98	5	NPSL B15D2	1.87	2.43
18847	2013-11-17	Seattle United NE Blue B98	3	TUSK Lightning B98	5	NPSL B15D2	1.47	3.27
17337	2013-11-03	Seattle United S Blue B98	4	Seattle United NE Blue B98	0	NPSL B15D2	3.25	1.44
16308	2013-10-27	Seattle United NE Blue B98	7	Whatcom Rangers White B98	0	NPSL B15D2	4.31	0.61
15432	2013-10-20	Seattle United NE Blue B98	2	Crossfire Select Lewis B98	4	NPSL B15D2	1.50	2.72
14500	2013-10-13	Highline Select B98	1	Seattle United NE Blue B98	2	NPSL B15D2	1.76	1.95
12415	2013-09-29	Seattle United NE Blue B98	1	Mercer Island FC Whitecaps B98	3	NPSL B15D2	1.22	3.05
11533	2013-09-22	Kent United Black B98	1	Seattle United NE Blue B98	4	NPSL B15D2	0.59	3.15
10553	2013-09-15	Seattle United NE Blue B98	0	Crossfire Select Mele B98	2	NPSL B15D2	0.84	1.94
9591	2013-09-08	NSC Gunners B98	2	Seattle United NE Blue B98	1	NPSL B15D2	1.87	0.92
6546	2013-08-11	Seattle United NE Blue B98	0	NK Inferno B98	1	Mt Hood Challenge BU15 Silver	1.49	2.50
6284	2013-08-10	Seattle United NE Blue B98	0	LASC Black Panthers B98	0	Mt Hood Challenge BU15 Silver	1.26	0.98
6296	2013-08-10	Pacific FC Blue-Strikers B98	7	Seattle United NE Blue B98	2	Mt Hood Challenge BU15 Silver	4.42	1.52
5982	2013-08-09	Pacific FC Orange-White B98	1	Seattle United NE Blue B98	0	Mt Hood Challenge BU15 Silver	1.75	0.81
5032	2013-07-28	Seattle United NE Blue B98	1	Washington Timbers Burgundy B98	1	Crossfire Select Cup BU15 Silver	1.34	2.58
4786	2013-07-27	Crossfire Select Mele B98	2	Seattle United NE Blue B98	0	Crossfire Select Cup BU15 Silver	1.94	0.84
4793	2013-07-27	NSC Gunners B98	1	Seattle United NE Blue B98	0	Crossfire Select Cup BU15 Silver	1.87	0.92
4573	2013-07-26	Seattle United NE Blue B98	0	NK Inferno B98	3	Crossfire Select Cup BU15 Silver	1.49	2.50
3047	2013-07-13	Seattle United Shoreline Blue B98	1	Seattle United NE Blue B98	0	Seattle Cup BU15	2.28	1.83
2814	2013-07-12	Seattle United NE Blue B98	1	FWFC Blue B98	1	Seattle Cup BU15	0.85	3.52
2819	2013-07-12	MVP Rapids Navy B98	2	Seattle United NE Blue B98	3	Seattle Cup BU15	2.32	2.19